



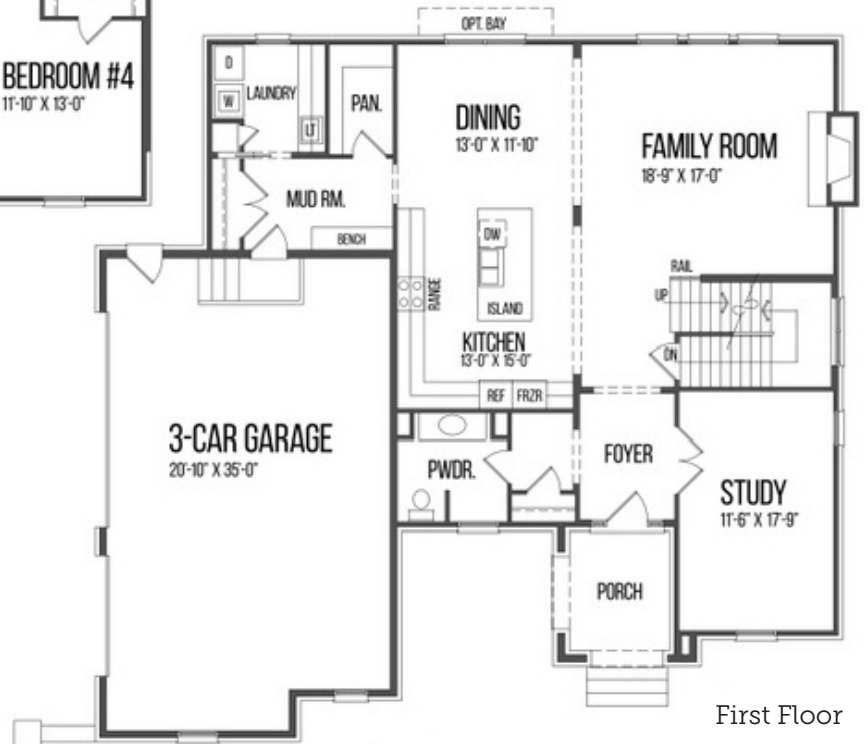
# Natalie \ 3,258 sf

- 4 Bedrooms
- 3.1 Baths
- 3-Car Garage
- Gourmet Kitchen with Walk-in Pantry and Island
- His/Her Owner's Bath Suite
- Standard Carpeting
- Standard Tile Flooring
- Basic Brushed Nickel Lighting Package
- Dimensional Shingles
- Covered Porch
- Walk-in Closet
- Lofted Foyer

[VENTUREBUILDINGCO.COM](http://VENTUREBUILDINGCO.COM) 586.292.4542



Second Floor



First Floor

