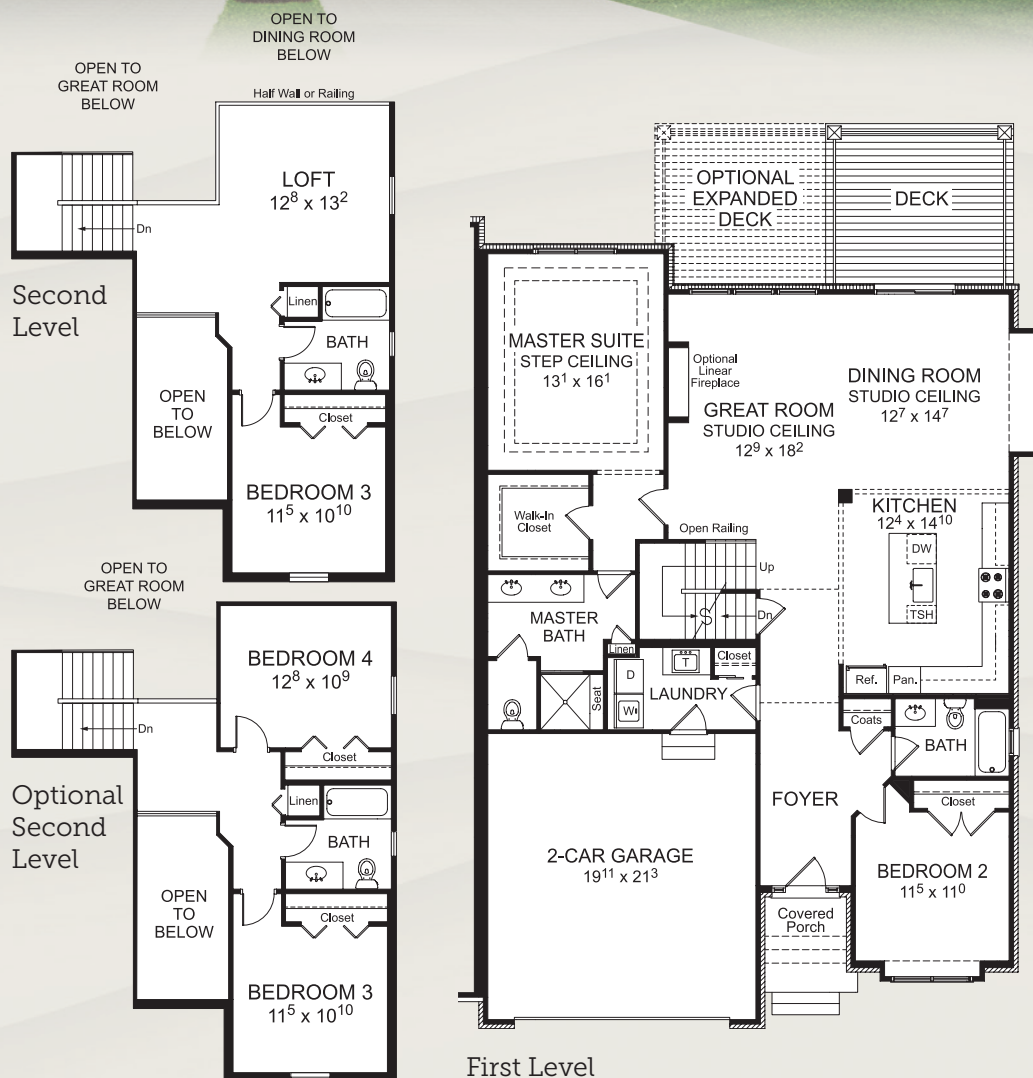




Cypress \ 2,206 sf

- First floor master suite with an additional 2 or 3 bedrooms
- Eclectic mix of brick, stone and shake cladding with a covered, recessed front porch entry
- Traditional brick exterior with elegant arched stone accents, shutters and an inviting front porch
- Two-story foyer offers direct sightlines to the great room
- L-shaped kitchen with island offers ample space for storage and entertaining
- Dining room features a sliding door with access to a personal deck and beautiful views
- Master suite includes a generous walk-in closet and spacious spa bath with double sinks
- A second bedroom and adjacent bath are located on the opposite side of the home for complete privacy
- Laundry room conveniently located off kitchen provides direct access to attached 2-car garage
- U-shaped staircase leads to the second level with second or third bedroom and full bath
- Loft that can be used as a den or office space



VILLAS AT SHADOW PINES
3898 ALBATROSS COURT
ROCHESTER HILLS, MI 48309
248.881.4474



VILLAS
AT SHADOW PINES

In order to meet homebuyer's expectations, we reserve the right to modify features, price, specifications and/or to change or discontinue models without notice or obligation.
Artist's drawings of the elevation and floor plan are not an exact representation or drawn to scale. Floor plan dimensions are approximate.
Specific details such as doors, windows, walls and other features depicted herein may vary depending on elevation style and options selected. ©2021 Venture Building Company

